

iPad POS

Assembly Instructions



iPad POS (freestanding)

1



Carefully lay all posts horizontally on floor. Insert 4 foot screws into 4 posts except 1m post with connector bars.

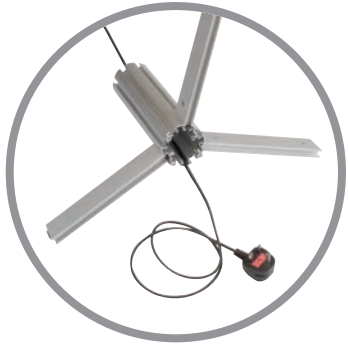
2



Take 265mm post and slot clamp of three 220mm profiles into desired channels for display. Ensure bottom of profiles are flush with bottom of post and tighten grub screws to secure in position.

If you are **not using cable management** for charging, please carefully stand post and profiles assembly upright and **proceed to Stage 6**

3



Feed figure-8 head of power lead through bottom of post and profiles assembly, leaving approximately 1m of cable at bottom.

4



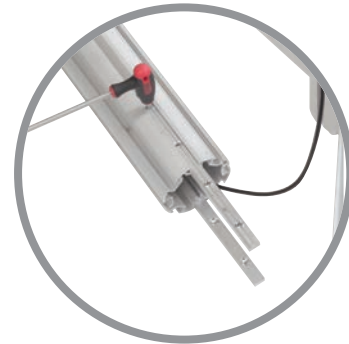
Stand post and profiles assembly upright ensuring lead is kept clear of foot screws.

5



Feed figure-8 head of power lead through 1m post at connector bar end, so it protrudes from top of post.

6



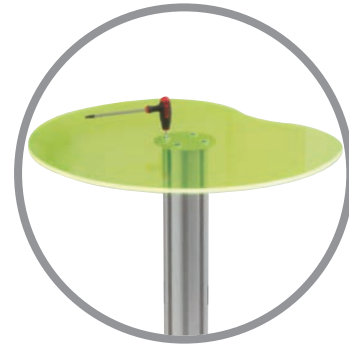
Loosen and slide connector bars halfway out of 1m post. Tighten grub screws of connector bars positioned in post channel to secure

7



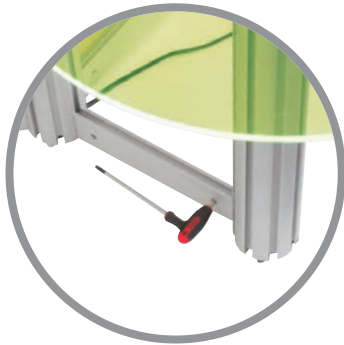
Connect the 1m and 265mm posts by locating connector bars into channels and sliding together. Tighten remaining grub screws to affix.

8



With countersunk holes in the Podium tops uppermost, align with holes of circular plates and fixings in the top of remaining small, medium and large posts. Fully insert 4 screws in each to secure.

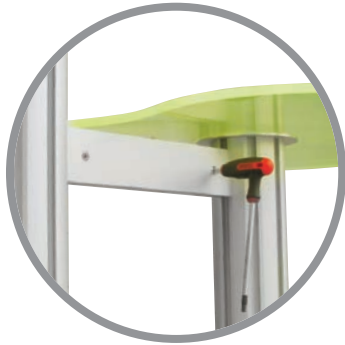
9



Starting with the smallest Podium table, position and slot clamp of one 220mm profile into post channel. Tighten grub screw to attach. Repeat process for medium and large Podium tables.



10



Position remaining 220mm profiles between posts near underside of Podium tops. Insert clamps into channels and secure by tightening grub screws.

If you are **not using cable management** for charging, please proceed to **Stage 17**.

11



Plug figure-8 head into USB Power Adapter (supplied with Apple iPad).

12



Unlock the iPad enclosure by inserting key into security lock and rotate 'QUARTER TURN ONLY' clockwise or counter-clockwise through 90 degrees which releases the locking pin. Return key back to original position to remove.

13



Lift fascia out of enclosure. Insert cable (supplied with Apple iPad) allowing 10cm to remain "free" at charge/sync connector end by gently pressing into retaining moulding.

14



Feed USB end of charge/sync cable through middle of enclosure, below pin, so it protrudes from bottom of support column.

15



Plug cable into USB Power Adapter.

16



Position black mains cable into internal post channel, and carefully slide USB Power Adapter inside post so the USB head of charge/sync cable is below upper edge of post.

17



Align first 2 holes of the iPad holder to the threads of the post. Insert and tighten screws to secure. Rotate iPad holder through 90°, aligning remaining 2 holes to threads of post. Insert and tighten screws to secure.

18



Plug charge/sync cable into iPad and place inside enclosure, gently press all four corners of iPad down into mouldings to hold.



NB – If you are not using cable management for charging, unlock the iPad enclosure by inserting key into security lock and rotate 'QUARTER TURN ONLY' clockwise or counter-clockwise through 90 degrees which releases the locking pin. Return key back to original position to remove. Lift fascia out of enclosure, and place iPad inside, gently pressing all four corners down into mouldings to hold.

19



Replace fascia and depress lock button to secure enclosure.

