

A very lightweight and attractive workstation with fine-grade fluted plastic tambour for a smoother finish. The plastic tambour is ideal for application of laminate graphics. Meteor is perfect for roadshows or where portability is important.



features & benefits

- Flat pack furniture constructed from composite materials and fluted plastic tambour
- No tools assembly, unit packs flat for easy transportation
- Complete with internal shelf & storage area
- Fluted plastic tambour wrap is available in white or covered with Prelude fabric (Tambour is suitable for direct printing or mounting)
- Top and internal shelf available in Birch, Silver or Black thermoformed finishes
- Carry bags or Carry cases are available as extra cost options



Internal shelf included, unit is open at the back



Laminate graphics can be applied to the tambour wrap or directly printed



Plastic tambour wrap is available in black, white or covered with Prelude fabric

hardware specifications	wrap specifications	additional info
<p>Hardware dimensions (mm): 1000 (h) x 860 (w) x 400 (d) approx.</p> <p>Weight: 7.5kg approx</p>	<p>Wrap dimensions (mm): 975 (h) x 1355 (w) approx.</p> <p>If applying a graphic to the wrap, an allowance should be made to its size to accommodate material type, thickness etc.</p> <p>Plastic tambour wrap thickness: 5mm thick approx</p> <p>Recommended viewable area for front unit (mm): 975 (h) x 920mm (w) approx</p>	<p>Availability: Plastic tambour wrap available in black, white or covered with a choice of Prelude fabric colours</p> <p>Top and internal shelf available in Birch, Silver or Black thermoformed finishes</p> <p>Recommended Carry bag or case: CBB-005 Carry bag or AC311 Carry case</p>

Assembly Instructions



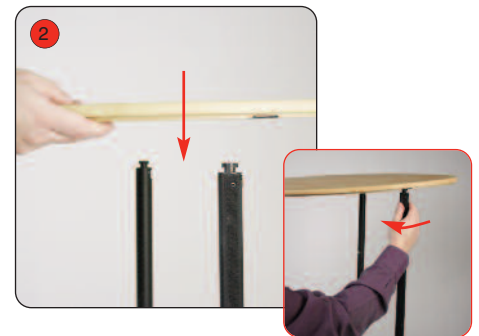
Kit includes: Top, base, tambour wrap, internal shelf and 3 twist & lock poles (2 poles have hook fastener attached)



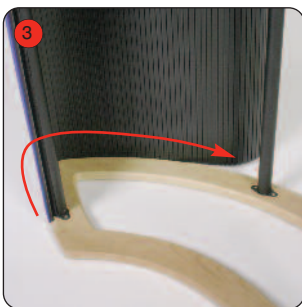
Place the two poles with hook fastener into the fittings located at the rear of the base. Place the remaining pole into the fitting at the front of the base. Twist to lock the poles into place.



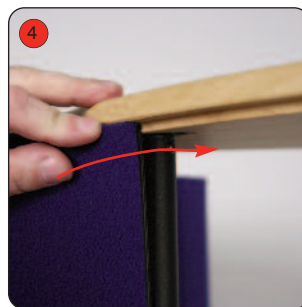
Ensure the poles have their slots nearest to the top of the unit.



Lower top onto the poles. Unfasten each pole and then refasten to secure the top to the base.



Attach the vertical edge of the wrap to the pole using loop fastener. Feed the wrap around the base, fitting into the groove securely.



Feed the wrap around the top at the same time as the base to ensure an even fit.



Finally fit the shelf into the unit, locating onto the 3 pole slots.

