

# LED LIGHTS

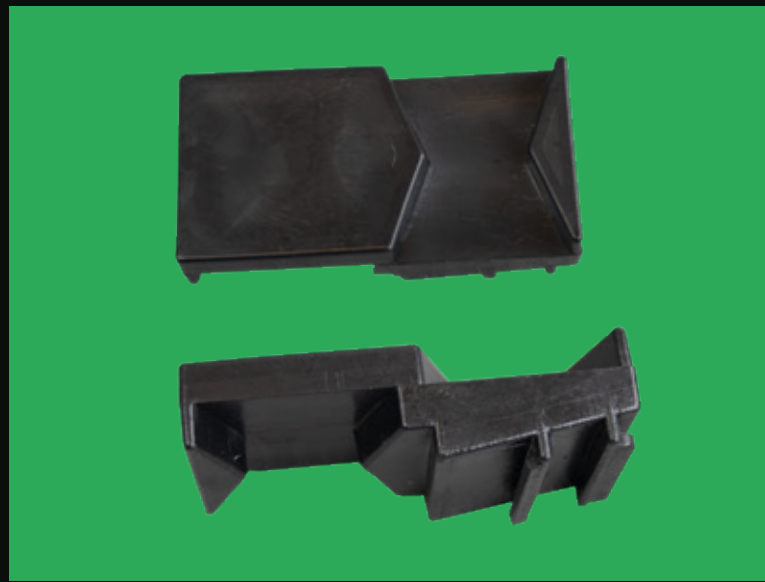
How to attach LEDs to your Fabric or Magnetic Pop-up

## DID YOU KNOW?

LEDs are 10x more efficient than halogen lights



Our LEDs come complete with: 12w LED light that gives up to 1200 lumen, Power Cable, UK & EU Plug & 2x light bracket fittings.



There are two light bracket fittings available, one suitable for use with fabric and magnetic pop-ups (small bracket) and one spare.



To attach the bracket to the light, slide the two smaller prongs onto the end of the halogen light.



To attach the light to your pop-up, lift the front of the light and slide the back underneath the scissor of the frame.



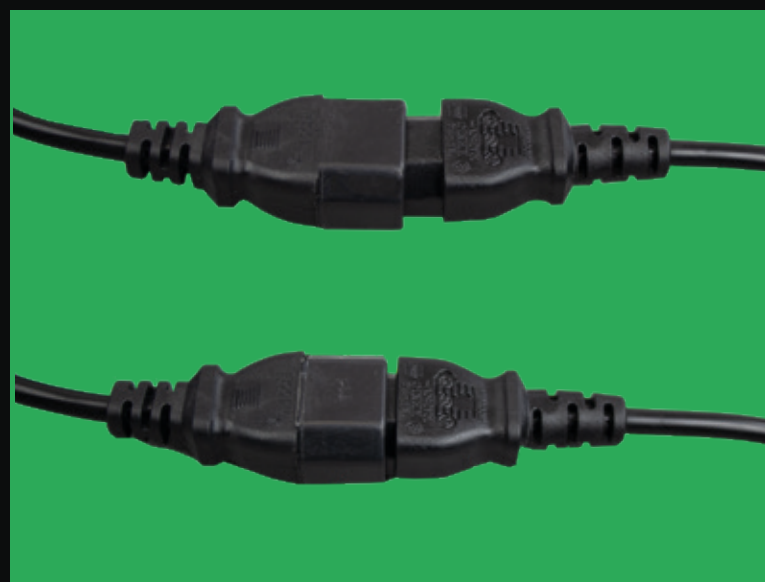
Push the light down to secure in place between the scissor. You can then adjust the halogen light head to give flood of light to the desired area.



Put the power cable into the back of the LED light and ensure it is secure.



Choose between a UK or EU plug depending on where in the world you are.



Finally, attach the UK or EU plug to the power cable and push tightly together. You're now ready to plug into the wall and switch on.