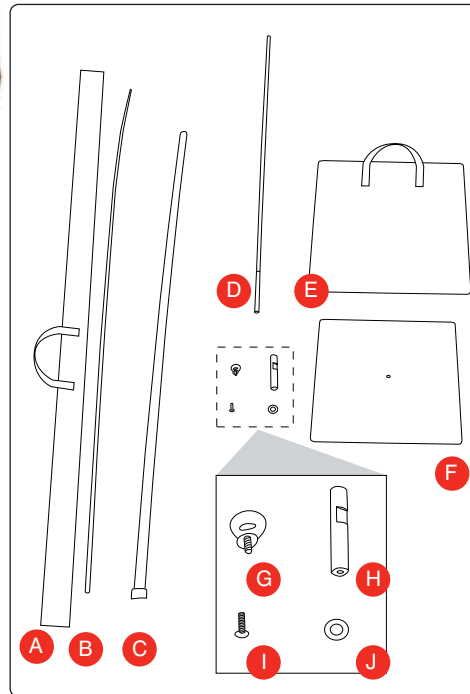




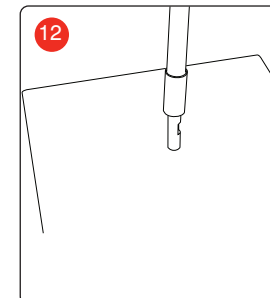
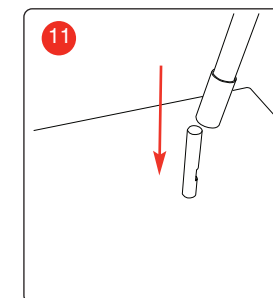
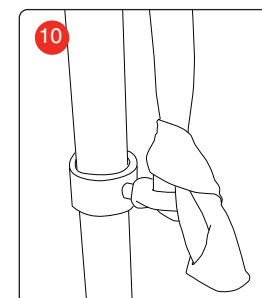
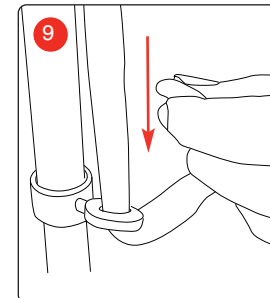
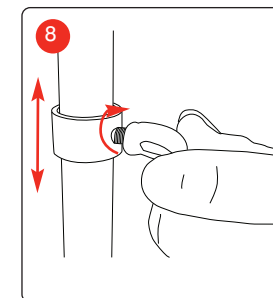
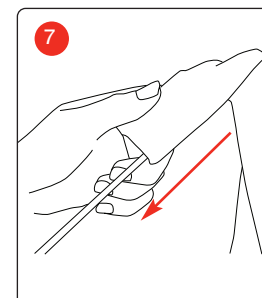
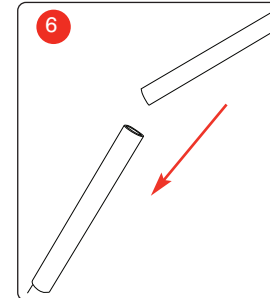
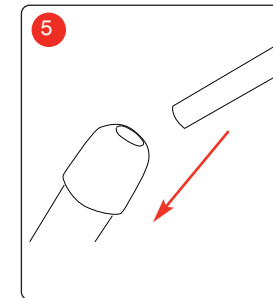
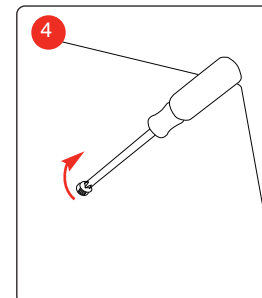
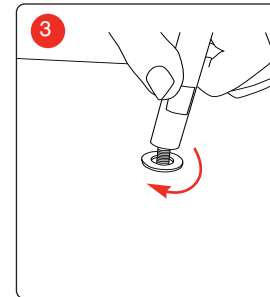
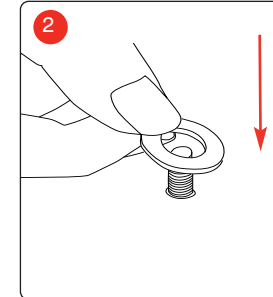
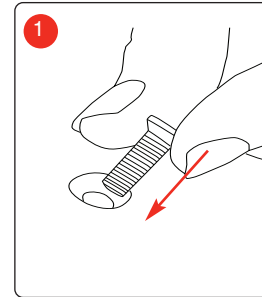
2250mm graphic  
3 x poles

1800mm graphic  
2 x poles

1800mm graphic  
3 x poles



- A) Pole bag B) Top pole section C) Base pole section
- D) Flag extension (use for 2500mm)
- E) Base bag F) Base G) Thumb screw
- H) Base to pole fixing J) Base screw J) Washer
- \* Screwdriver not included



Hardware specifications

Assembled dimensions 2500/1800mm (h) x 300mm (w) x 300mm (d) (mm) approx

Graphic specifications

Graphic Area: 1800(h) x 842(w) (mm) approx  
2250(h) x 1169(w) (mm) approx